

Atlas Copco

W2411
Impact Wrench

SmartQIC
& MultiFlex

W2915
Impact Wrench

W2428
Impact Wrench

W2415
Impact Wrench

Tools for Industry and Crafts

A selection of tools for tightening, drilling, grinding,
chipping, scaling, sanding, cutting, etc

BRING A CENTURY OF EXPERIENCE TO YOUR PROJECT.

PRODUCT HIGHLIGHTS

Riveting Tools

For blind rivets and rivet nuts

POP-rivets are a cost efficient yet reliable solution, perfect for one-sided access in assembly. Sturdier than screws –tight and durable to both vibrations and the elements of nature.

Atlas Copco riveting solutions are designed to minimize vibrations and delivering high performance. The compact design offers easy accessibility in tight and cramped spaces –a common challenge in aerospace industry and white goods.


This new Atlas Copco riveting solution promises high-quality fastening with high-quality tools.

Features and benefits

- Low weight and better grip with plastic body
- Low vibration and noise proofed
- Hardened steel pulling mechanism for endurance and power
- Mandrel container, for environmentally friendly and safer working site
- Efficient air consumption, dual function using same air for sitting the rivet to extract mandrel to the container.
- Safety feature to prevent the ejection of mandrel if container not in place


Premiere

R1005
8426 1005 00



1190,- €

R1006
8426 1005 00



1860,- €

R2012
8426 2012 00

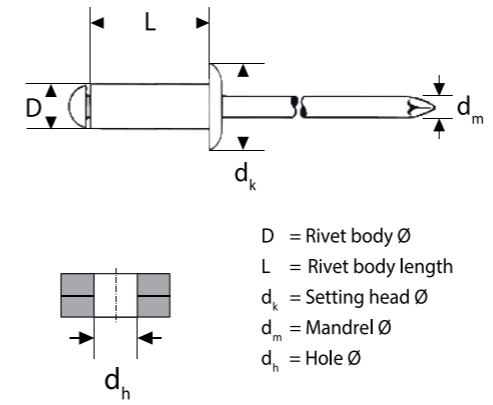


2590,- €

Model	Weight [kg]	Diameters in all materials	Diameters in Aluminum and Steel	Traction power at 6 bar [N]	Stroke [mm]	Air consumption per rivet [liter]	min. operating pressure [bar]	max. operating pressure [bar]	Air hose inlet [mm]	Ordering No.
Blind rivets										
R1005	1.6	up to 5 mm (max. mandrel Ø 3.2 mm)	up to 6 mm (max. mandrel Ø 3.2 mm)	11000	18	2.3	5	7	6	8426 1005 00
R1006	1.9	up to 6.4 mm (max. mandrel Ø 4.5 mm)	up to 6.4 mm (max. mandrel Ø 4.5 mm)	18000	25	4.8	5	7	6	8426 1006 00
Rivet nuts										
R2012	2.4	M3 to M10	M3 to M12	22000	10	2-4	5	7	6	8426 2012 00

Blind Rivets

Part No.	Name	Long Rivet Range [mm]	Drill Bit [mm]	Suitable Nosepiece"	Rivets per Box [pcs]	Material	D [mm]	L [mm]	Shear Force [N]	Tensile Force [N]
3520061000	LR-AS 3,2X 8,0	0.5 - 5.0	3.3	17/24	1000	Alu/steel	3.2	8	720	1050
3520061001	LR-AS 3,2X 9,5	1.5 - 6.5	3.3	17/24	1000	Alu/steel	3.2	9.5	720	1050
3520061002	LR-AS 3,2X11,0	3.0 - 8.0	3.3	17/24	1000	Alu/steel	3.2	11	720	1050
3520061003	LR-AS 4,0X10,0	0.5 - 6.5	4.1	17/24	500	Alu/steel	4	10	1060	1680
3520061004	LR-AS 4,0X13,0	3.5 - 9.5	4.1	17/24	500	Alu/steel	4	13	1060	1680
3520061005	LR-AS 4,0X17,0	7.0 - 13.0	4.1	17/24	500	Alu/steel	4	17	1060	1680
3520061006	LR-AS 4,8X10,0	0.5 - 6.5	4.9	17/29	500	Alu/steel	4.8	10	1500	2300
3520061007	LR-AS 4,8X15,0	4.5 - 11.0	4.9	17/29	500	Alu/steel	4.8	15	1500	2300
3520061008	LR-AS 4,8X17,0	6.5 - 13.0	4.9	17/29	500	Alu/steel	4.8	17	1500	2300
3520061009	LR-AS 4,8X25,0	11 - 19.5	4.9	17/29	250	Alu/steel	4.8	25	1500	2300
3520061010	LR-AS 6,4X15,0	1.5 - 9.0	6.5	17/40	250	Alu/Stahl	6.4	15	2800	4000
3520061011	LR-AS 6,4X20,0	6.0 - 14	6.5	17/40	250	Alu/Stahl	6.4	20	2800	4000

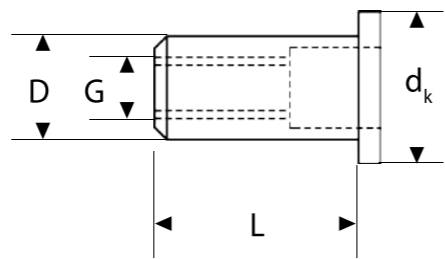


Rivet Nuts

Part No.	Name	Long Rivet Range [mm]	Drill Bit [mm]	Nosepiece	Rivets per Box [pcs]	Material	Force Adjustment	D [mm]	L [mm]
3520061012	LN-A M5x7x13,5	0.25 - 5.0	7.1	Nosepiece M5	500	Aluminium	Green	7	13.5
3520061013	LN-A M6x9x18,0	0.25 - 6.0	9.1	Nosepiece M6	250	Aluminium	Green	9	18
3520061014	LN-A M8x11x20,0	0.5 - 6.5	11.1	Nosepiece M8	100	Aluminium	Green	11	20
3520061015	LN-S M5x7x13,5	0.25 - 5.0	7.1	Nosepiece M5	500	Steel	Yellow	7	13.5
3520061016	LN-S M6x9x18,0	0.25 - 6.0	9.1	Nosepiece M6	250	Steel	Yellow	9	18
3520061017	LN-S M8x11x20,0	0.5 - 6.5	11.1	Nosepiece M8	100	Steel	Yellow	11	20



D = Rivet nut body Ø
L = Rivet nut body length
d_k = Setting head Ø
G = Thread dimension



Setting force pre-adjustment by color code

Bolt size	Rivet Material		
	Aluminium	Steel	Stainless steel
M3	Green	Green	Green
M4	Green	Green	Green
M5	Green	Yellow	Yellow
M6	Green	Yellow	Yellow
M8	Yellow	Yellow	Yellow
M10	Yellow	Yellow	Yellow
M12	Yellow	Yellow	Yellow





The benefits of riveting
Blind riveting has replaced threaded fastening as the preferred fastening solution in the construction of for example aircrafts, ships, trucks, and cars. The benefits are clear and vital.



Fastening in one-sided access



Vibration resistant fastening



Joins dissimilar materials

PRODUCT HIGHLIGHTS

ACTW Torque Wrenches

Manual torquing at its best

The series can be used as a stand-alone product or together with Atlas Copco impact Wrenches to ensure that the correct torque has been applied for non-critical applications.

All of these click type torque wrenches come with a quality ratchet head that provides a distinctive and audible click sound. The series comes in different models covering a torque range of 5-1000 Nm. The series provides a ±4% accuracy based on the EN ISO 6789-1:2017 standard.

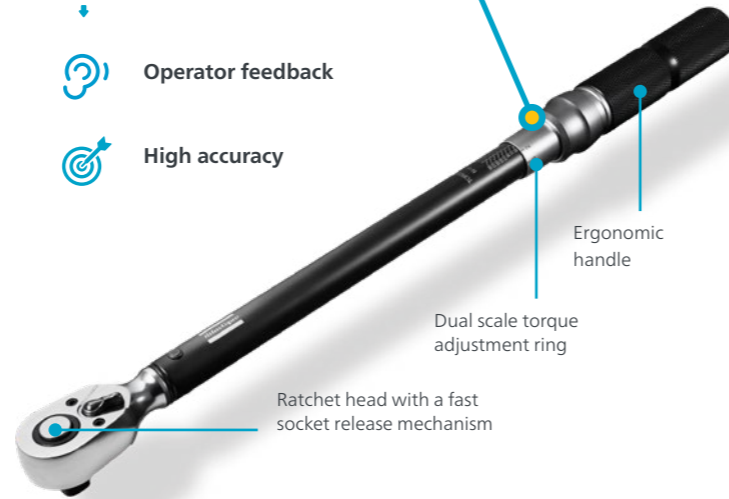
Benefits

- Easy to reach cramped spaces
- Durable aluminium handle for easy operator handling
- Audible click sound for real-time operator feedback
- Up to 25,000 cycles



Features

- Compact design
- Light weight
- Operator feedback
- High accuracy



In Stock

New Models

S2 Screwdrivers

Pneumatic

Direct Drive Screwdrivers are suitable for self-drilling and wood screws. The tools are well balanced and quiet. A soft-start trigger ensures smooth operation and the air exhaust is adjustable through 360 degrees.

Slip-Clutch Screwdrivers provide an implied pulsating force, or slip, once you reach the desired torque.

Shut-off Screwdrivers offer impressively high torque accuracy. Our fast shut-off models deliver smooth performance and high quality tightening.

Both versions feature adjustable torque settings, trigger and push start for pistol grips, and lever and push start for straight models.

Benefits

- Shut-off and slip-clutch for precision clamping
- Well balanced and ergonomic
- Soft-start trigger for smooth operation
- 360 degree adjustable air exhaust
- Silent

S2306-CE
8431 0257 06



520,- €

S2355-CE
8431 0257 55



400,- €

S2445-L
8431 0257 45



810,- €

S2465-L
8431 0257 65



810,- €

S2443-P
8431 0257 43



1150,- €

S2475-P
8431 0257 75



1080,- €

Handle	Model	Chuck	Torque range [Nm]	Free Speed [rpm]	Weight [kg]	Length [mm]	Air consumption at free speed [l/s]	Air Inlet	Starting Method			Ordering No.
									Push	Push and trigger/lever	trigger/lever	
Direct Drive												
Pistol	S2305	1/4"	0-12	750	0.9	198	5.6	1/4"				8431025728
Pistol	S2326	1/4"	0-4.5	2400	0.8	178	5.6	1/4"				8431025736
Slip Clutch												
Pistol	S2306-CE	1/4"	1-6	1700	0.9	190	10	1/4"				8431025706
Pistol	S2307-CE	1/4"	2.5-10	900	1.2	245	8.4	1/4"				8431025726
Pistol	S2308-C	1/4"	2.5-11	950	1.1	225	8.4	1/4"				8431025720
Pistol	S2310-C	1/4"	2-15	800	1.1	225	8.5	1/4"				8431025724
Straight	S2340-C	1/4"	0.5-2	1300	0.9	250	4	1/4"				8431025740
Straight	S2355-CE	1/4"	1.5-5.5	1700	0.8	207	13.1	1/4"				8431025755
Straight	S2360-C	1/4"	1.3-7	700	0.9	260	4	1/4"				8431025760
Straight	S2370-C	1/4"	2-6	1300	0.9	250	4	1/4"				8431025770
Shut Off												
Straight	S2426-L	1/4"	1.2-2.6	1500	0.9	230	6	1/4"				8431025780
Straight	S2428-L	1/4"	3.5-7	700	1	242	6	1/4"				8431025781
Straight	S2416-L	1/4"	0.5-1.6	1500	0.9	230	6	1/4"				8431025782
Straight	S2445-L	1/4"	0.5-4.5	1700	0.8	232	13.7	1/4"				8431025745
Straight	S2465-L	1/4"	0.8-6.5	1000	0.8	232	14.6	1/4"				8431025765
Pistol	S2443-P	1/4"	0.4-4.3	1100	0.8	182	6.5	1/8"				8431025743
Pistol	S2450-P	1/4"	2.4-5	1100	1.1	225	6	1/4"				8431025784
Pistol	S2475-P	1/4"	1-7.5	1000	1.1	235	10	1/4"				8431025775

Impact Sockets

Model	Square drive [in]	Torque range [Nm]	Accuracy (EN ISO 6789:2017)	Length [mm]	Weight [kg]	Ordering No.	Price
ACTW05	1/4"	5-25	± 4 %	248	0.4	8434 0300 01	119 €
ACTW20	3/8"	20-100	± 4 %	408	1.2	8434 0300 02	119 €
ACTW40	1/2"	40-200	± 4 %	519	1.6	8434 0300 03	139 €
ACTW150	3/4"	150-750	± 4 %	1124	5.7	8434 0300 04	499 €
ACTW200	1"	200-1000	± 4 %	1224	6.5	8434 0300 05	649 €

WS1001
4112 0607 91

48,- €

WS1002
4112 0607 92

59,- €

WS1003
4112 0607 93

105,- €

Model	Square drive [in]	Socket type	Number of sockets	Sockets included [mm]	Ordering No.
PRO WS1001	3/8"	Metric impact socket	13	7, 8, 9, 10, 11, 12, 13, 14, 15, 16, 17, 18, 19	4112 0607 91
PRO WS1002	1/2"	Metric impact socket	14	10, 11, 12, 13, 14, 15, 16, 17, 18, 19, 21, 22, 26, 27	4112 0607 92
PRO WS1003	1/2"	Metric deep impact socket	14	10, 11, 12, 13, 14, 15, 16, 17, 18, 19, 21, 22, 26, 27	4112 0607 93

S8 Screwdrivers

Electric

The S8 series offers a wide variety of screwdrivers that give great speed and high precision. Built with an ergonomic design, the low torque screwdriver S8 offers a plug & play solution for your assembly needs. The S8 series is designed to deliver great quality and increase efficiency.

Benefits

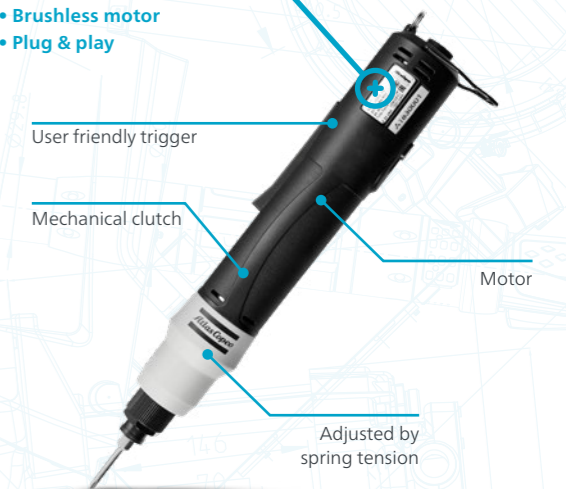
- Ergonomic design for easy operator handling
- Built to last
- Providing long service intervals
- Simple start-up process

Model	Bit drive	Torque range min. - max. [cNm]	Free speed [r/min]	Weight [kg]	Ordering No.
S8020	1/4" Hex	3-20 cNm	700-1000	0.46	4221000273
S8020-WS	Wing shank 4 mm	3-20 cNm	700-1000	0.46	4221000272
S8050	1/4" Hex	5-50 cNm	700-1000	0.46	4221000274
S8120	1/4" Hex	15-120 cNm	700-1000	0.46	4221000275
S8120-2000	1/4" Hex	15-120 cNm	1400-2000	0.46	4221000276
S8160	1/4" Hex	20-160 cNm	700-1000	0.46	4221000277
S8200	1/4" Hex	40-200 cNm	700-1000	0.46	4221000278
S8250	1/4" Hex	50-250 cNm	500-750	0.46	4221000279
Power Supply EBS D				0.38	4221000280

NOTE: Power Supply needs to be ordered separately

All prices are recommended campaign prices excluding VAT. Offers valid from 2023-03-01 to 2023-12-31.

- Industrial design
- High durability
- Brushless motor
- Plug & play



Contact your Atlas Copco distributor to buy these tools.

W2915 8434 1248 52

Powerful impact for fast run down and four torque settings

- 1/2" square drive
- 200-800Nm
- 1000Nm reverse torque
- 1.98kg
- 6.3 bar
- 18 l/s



269,- €

W2428 8434 1248 60

W2428 features a robust housing and can handle tough environments providing fast rundown and tightening

- 1"
- 800Nm-1600Nm
- 2800Nm reverse
- 10.5 kg
- 6.3 bar
- 50 l/s



899,- €

W2630 8431 0350 30

Perfect for narrow spaces and quick tightening

- 1/2"
- 25-80Nm
- 1.2kg
- 6.3bar
- 11l/s



249,- €

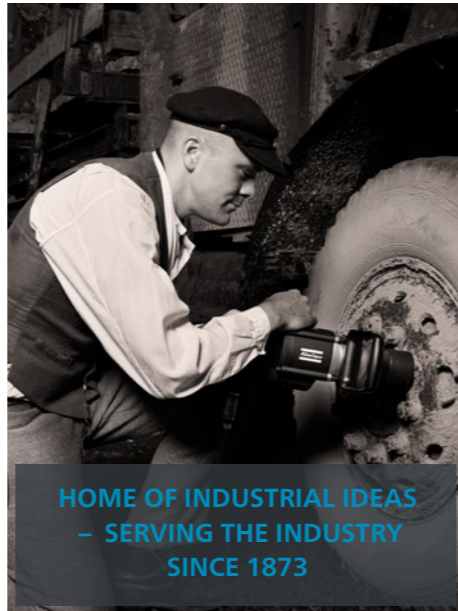
W2920 8434 1248 53

Powerful impact for fast run down and four torque settings

- 3/4" square drive
- 300-1450 Nm
- 1500Nm max reverse
- 3.24
- 6.3 bar
- 27 l/s



579,- €



HOME OF INDUSTRIAL IDEAS
- SERVING THE INDUSTRY
SINCE 1873

D2163 8421 0410 08

You can rely on the all-metal drill to deliver superior hole quality in your most demanding applications due to its high spindle accuracy and lube-free motor.

- 2000rpm
- Chuck capacity 1.5-10mm
- 1.1 kg
- 330W
- 9.3l/s



459,- €

D2160 8421 0410 16

Designed with operator comfort in mind, the PRO Pistol Drill D21 offers speed, power, accuracy, and a smooth quiet operation

- 2400rpm
- Chuck capacity 1.5-10mm
- 0.85 kg
- 460W power
- 11l/s



279,- €



G2420 8423 0304 20

Belt sander for precision sanding. Head rotation ensures versatile solution for many applications.

- 1500rpm
- 350W
- 19x520mm belt dimension
- 1kg
- 6.3 bar
- 11l/s



399,- €



	Grit size				Price
	40+	60+	80+	120+	
G2410 Sanding belt					
20 pcs, 6 x 305 mm (1/4"x12")	4170 1208 00	4170 1208 02	4170 1208 03	4170 1208 04	19,- €
20 pcs, 13 x 305 mm (1/2"x12")	4170 1208 05	4170 1208 06	4170 1208 07	4170 1208 08	39,- €
G2420 Sanding belt					
20 pcs, 19 x 520 mm (3/4"x20-1/2")	4170 1208 13	4170 1208 14	4170 1208 15	4170 1208 16	69,- €



Learn more about our ergonomic tools.

G2410 8423 0304 10

Belt sander for precision sanding. Head rotation ensures versatile solution for many applications.

- 1400rpm
- 275W
- 13x305mm belt dimension
- 1 kg
- 6.3bar
- 11l/s



359,- €

G2407-M14 8423 0304 55

Super slim tool for polishing fine sanding applications.

- M14 spindle
- 12mm spindle length
- 200mm max pad size
- 350W
- 1.4 kg
- 6.3bar
- 10l/s



499,- €

G2451 8423 0313 01

Vertical grinder for rough grinding and cutting off operations

- 8500rpm
- Max 180mm wheel
- 1100W
- UNC5/8" spindle thread
- 30mm spindle length
- 2.7kg
- 6.3bar
- 21l/s



229,- €

C1050 8424 1110 50

Cut through most materials with ease. Due to its gear mechanism the tool will not stall as a conventional air saw commonly do.

- 5mm stroke length
- 10500 strokes per minute
- 0.52kg
- 6.3 bar
- 2.2l/s



269,- €

G2412-1 8423 0312 21

Robust die grinder for grinding and finishing in general industry.

- 6mm collet
- 20000rpm
- 350W
- 178mm length
- 0.5kg
- 6.3bar
- 13l/s

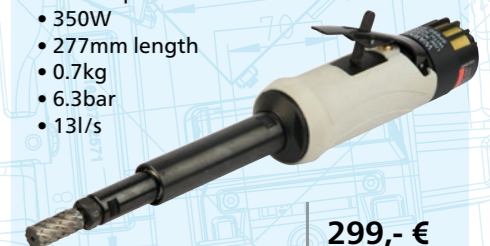


239,- €

G2422-1 8423 0312 47

Robust extended die grinder for grinding and finishing in general industry.

- 6mm collet
- 20000rpm
- 350W
- 277mm length
- 0.7kg
- 6.3bar
- 13l/s



299,- €

All prices are recommended campaign prices excluding VAT. Offers valid from 2023-03-01 to 2023-12-31.

Contact your Atlas Copco distributor to buy these tools.

THE YELLOW CORNER – grinding & sanding



GTG25 F085-18

DIE GRINDERS

Professional die grinders for industrial applications where ergonomics, power and durability is of outmost importance.

Features

- Scatter damping
- Impressive power to weight ratio
- Integrated speed governor
- Built-in silencer for noise reduction
- Exhaust hose included

Benefits

- Reduced risk of vibration related injuries
- High productivity and short process time
- Optimized process speed
- Reduced noise levels
- High durability and long service life



ANGLE DIE GRINDERS

Equipped with a powerful air motor and a speed governor, giving the best sanding experience. Ergonomically designed with the option of dust extraction, the Angle Grinder LSV19 & LSV12 offers great operator comfort.

Model	Max free speed [r/min]	Max output [kW]	Collet size [mm]	Length [mm]	Weight [kg]	Air consumption at max output [l/s]	Air consumption at free speed [l/s]	Rec. hose size [mm]	Air inlet thread [BSP]	Scatter damped	Ordering No.
Straight Die grinders											
LSF12 S200-1	20000	0.24	6	170	0.36	8.1	2.6	8	1/4	-	8423 1124 01
LSF12 S250-1	25000	0.29	6	170	0.36	8.5	3.4	8	1/4	-	8423 1124 02
LSF12 S310-1	31000	0.32	6	170	0.36	9.2	4.2	8	1/4	-	8423 1124 03
LSF12 S400-1	40000	0.36	6	170	0.36	9.8	7.0	8	1/4	-	8423 1124 04
LSF19 S200-1	20000	0.5	6	193	0.5	9.6	3.5	10	1/4	•	8423 1224 80
LSF19 S300-1	30000	0.5	6	193	0.5	11.3	6.6	10	1/4	•	8423 1224 81
LSF19 S460-1	46000	0.5	6	193	0.5	11.4	15	10	1/4	•	8423 1224 82
LSF29 S250E ³	25000	1	6	332	1.4	22	9	13	3/8	-	84230 127 14
LSF29 S180E	18000	0.9	6	332	1.4	20	6	13	3/8	•	84230 127 08
LSF 29 S150E	15000	0.8	6	332	1.4	18	4	13	3/8	•	84230 127 04
Straight extended die grinders											
LSF19 S300E-1	20000	0.5	6	293	0.7	11.3	6.6	10	1/4	•	8423 1224 85
LSF19 S300E-1	30000	0.5	6	293	0.7	11.3	6.6	10	1/4	•	8423 1224 86
LSF19 S460E-1	46000	0.5	6	293	0.7	11.4	15	10	1/4	•	8423 1224 87
LSF29 S250 ³	25000	1	6	213	0.8	22	9	13	3/8	-	84230 127 11
LSF29 S180	18000	0.9	6	213	0.8	20	6	13	3/8	•	84230 127 05
LSF29 S150	15000	0.8	6	213	0.8	38.1	9.3	13	3/8	-	84230 127 02
LSF29 S120	12000	0.7	6	213	0.8	36.0	7.4	13	3/8	-	84230 127 00
LSF39 S120E	12000	1.5	6	367	1.6	24	9	13	3/8	-	8423 1233 00
LSF39 S150E	15000	1.7	6	367	1.6	28	12	13	3/8	-	8423 1233 01
LSF39 S250E a	25000	1.8	6	367	1.6	33	33	13	3/8	-	8423 1233 03
Angle die grinders											
LSV12 S120-1	12000	0.24	6	166	0.54	8.3	3.0	8	1/4	-	8423 1124 05
LSV12 S200-1	20000	0.26	6	166	0.54	9.5	6.4	8	1/4	-	8423 1124 06
LSV19 S080-1	8000	0.37	6	185	0.6	11.3	6.5	10	1/4	-	8423 0111 46
LSV19 S120-1	12000	0.46	6	185	0.6	11.3	7.5	10	1/4	-	8423 0111 43
LSV19 S200-1	20000	0.46	6	185	0.6	11.3	7.5	10	1/4	-	8423 0111 41
LSV29 S150	15000	0.7	6	251	1.2	21	8	13	3/8	-	8423 0127 40

"GTG grinders, the most powerful angle grinders in the world."



For more info on GTG grinders

Features

- High power-to-weight ratio
- Advanced 2-stage turbine motor
- Ergonomic design
- Precise speed governor
- Autobalancer to minimize vibrations (grinders)
- Built-in spindle lock
- Safety trigger
- Overspeed shut-off device

Benefits

- Highest material removal rate in its class
- Oil free operation
- Minimum sound levels
- Reduced risk of vibration related injuries
- Great operator comfort for easy handling

Model	Max free speed [r/min]	For wheel dia [mm]	Spindel thread	Max output [kW]	Weight [kg]	Height over spindle [mm]	Air consumption at		Rec. hose size [mm]	Air inlet thread [BSP]	Ordering No.
							max output [l/s]	free speed [l/s]			
For grinding and cutting off											
GTG25 F120-13	12000	125	-	2.5	2.1	59	32	9	16	3/8	8423 2525 01
GTG25 F120-M14	12000	125	M14	2.5	2.1	59	32	9	16	3/8	8423 2525 10
GTG25 F120-5/8	12000	125	UNC 5/8	2.5	2.1	59	32	9	16	3/8	8423 2525 12
GTG25 F085-18	8500	180	-	2.5	2.2	59	32	9	16	3/8	8423 2525 02
GTG25 F085-M14	8500	180	M14	2.5	2.2	59	32	9	16	3/8	8423 2525 11
GTG25 F085-5/8	8500	180	UNC 5/8	2.5	2.2	59	32	9	16	3/8	8423 2525 13
For Sanding											
GTG25-S085	8500	180	5/8-11	2.5	2.0	59	32	9	16	3/8	8423 2525 03
GTG25-S085-M14	8500	180	M14	2.5	2.0	59	32	9	16	3/8	8423 2525 04
GTG25-S060	6000	230	5/8-11	2.5	2.0	59	32	9	16	3/8	8423 2525 20
GTG25-S060-M14	6000	230	M14	2.5	2.0	59	32	9	16	3/8	8423 2525 21



LSV39 S085-M14

LSV39 S085-M14

Regular spindle or short spindle

Your best friend when sanding! The Pneumatic Angle Sander LSV39 is a small and lightweight yet very powerful tool. Suitable for medium to rough sanding, the LSV39 comes with a speed governor to ensure optimum process speed. It offers great accessibility in cramped and narrow spaces. The extra durable angle gear requires minimum lubrication. It has the possibility to utilize dust extraction for improved health and safety.



For more info on LSV39 grinders and sanders

Model	Max free speed [r/min]	Max output [kW]	Max wheel pad dia [mm]	Weight [kg]	Spindel thread	Spindel length [mm]	Max Output [l/s]	Free speed [l/s]	Rec. hose size [mm]	Air inlet thread [BSP/NPT]	Ordering No.
Angle sander											
LSV39 S085-5/8	8500	1.8	180	1.6	5/8-11 UNC	28	29.5	16.3	13	3/8	8423 0133 03
LSV39 S085-M14	8500	1.8	180	1.6	M14	28	29.5	16.3	13	3/8	8423 0133 04
LSV39 S066-5/8	6600	1.6	180	1.6	5/8-11 UNC	28	26.2	11.6	13	3/8	8423 0133 05
LSV39 S066-M14	6600	1.6	180	1.6	M14	28	26.2	11.6	13	3/8	8423 0133 06
LSV39 S120-5/8	12000	1.8	125	1.6	5/8-11 UNC	28	29.8	17.6	13	3/8	8423 0133 07
LSV39 S085-M14S	8500	1.8	180	1.6	M14	19	29.5	16.3	13	3/8	8423 0133 11



For more info on die grinders



Contact your Atlas Copco Distributor for price and availability

Contact your Atlas Copco Distributor for price and availability

MultiFlex

MultiFlex Swivel Multi-directional connector

The MultiFlex swivel is an ingenious multi-directional connector. Connect your tool and the hose will stay in the ideal position however much you and the tool move around. The MultiFlex bends and rotates 360° in all directions while the hose stays straight. It takes the effort out of working in those cramped spaces. What's more, the hose feels almost weightless and it reduces hose wear. It's the magic of MultiFlex – a marriage of ergonomic thinking and ingenious design.

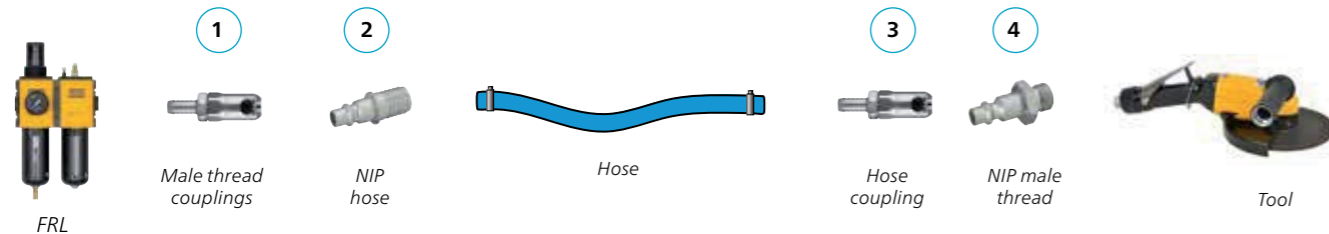
Benefits and features

- Ergonomic.
- Reduces hose wear.
- High flow capacity.
- Minimum pressure drop.
- Strong and durable.
- Available with rubber (EPDM) protective cover.
- Fits most pneumatic tools.



Model	Max. rec. air flow l/s	Thread		Weight g	Length mm	Dia mm	Ordering No.
		Inlet female [In]	Outlet male [In]				
Standard							
MultiFlex 1/8" BSP	12	1/8	1/8	73	66,2	24	8202 1350 18
MultiFlex 1/4" BSP	12	1/4	1/4	73	66,2	24	8202 1350 20
MultiFlex 3/8" BSP	32	3/8	3/8	130	80,6	29,5	8202 1350 22
MultiFlex 1/2" BSP	32	1/2	1/2	125	80,6	29,5	8202 1350 24
Protective rubber cover							
MultiFlex 1/8" BSP	12	1/8	1/8	76	66,2	27	8202 1350 40
MultiFlex 1/4" BSP	12	1/4	1/4	76	66,2	27	8202 1350 41
MultiFlex 3/8" BSP	32	3/8	3/8	130	80,6	29,5	8202 1350 42
Hoher Luftdurchfluss							
High air flow	54	1/2	1/2	326	98,3	39	8202 1350 60

^a The pressure drop will be 0.2 bar at an inlet pressure of 6 bar.



Note: Most Atlas Copco tools come with a female thread, please check the tread before choosing your coupling and nip selection.

Example

Connection type	Coupling ErgoQIC 10	Ordering No.	Size		Connection type	Nipple ErgoNIP 10	Ordering No.	Size	
			mm	in				mm	in
H – Hose	H06	8202 1120 30	6.3	1/4	H – Hose	H06	8202 1220 35	6.3	1/4
	H08	8202 1120 40	8	5/16		H08	8202 1220 43	8	5/16
	H10	8202 1120 02	10	3/8		H10	8202 1220 50	10	3/8
	H13	8202 1120 10	12.5	1/2		H13	8202 1220 68	12.5	1/2
	H16	8202 1120 50	16	5/8		H16	8202 1220 76	16	5/8
	H20	8202 1120 60	19	3/4		H20	8202 1220 77	19	3/4
M – Male	M08	8202 1120 85	1/4	BSP	SH – Safety Hose ^a	SH06	8202 1220 37	6.3	1/4
	M10	8202 1120 93	3/8	BSP		SH08	8202 1220 45	8	5/16
	M15	8202 1120 97	1/2	BSP		SH10	8202 1220 52	10	3/8
	M20	8202 1120 98	3/4	BSP		SH13	8202 1220 70	12.5	1/2
	M25	8202 1120 99	1	BSP		SH16	8202 1220 74	16	5/8
F – Female	F08	8202 1121 00	1/4	BSP	M – Male	M08	8202 1220 01	1/4	BSP
	F10	8202 1121 05	3/8	BSP		M10	8202 1220 19	3/8	BSP
	F15	8202 1121 10	1/2	BSP		M15	8202 1220 27	1/2	BSP

SmartQIC

Pre-mounted hose kits

Atlas Copco SmartQIC hose kits provides an easy & safe way to choose the right hose and coupling combination for pneumatic tools. Each kit is ready for immediate use without the need of assembly tools.



Benefits and features

- Correct combination hose – coupling.
- Leak free hose connections.
- Plug & Play

Market	Application	Nipples included	Max rec. air flow		Max working pressure		Ordering No.	
			l/s	cfm	bar	psi		
EU 7.6								
SmartQIC 08E	Hose kit	Assembly	1/4"	7.5	15.9	14	203	4221 0000 80
		Assembly	1/4" and 3/8"	13	27.5	12	174	4221 0000 81
		Assembly	1/4" and 3/8"	13	27.5	12	174	4221 0000 82
		Assembly	3/8" and 1/2"	21	44.5	11	160	4221 0000 85
	Whip hose	Assembly	3/8" and 1/2"	21	44.5	11	160	4221 0000 86
		Heavy Duty	3/8" and 1/2"	21	44.5	20	290	4221 0000 83
		Heavy Duty	3/8" and 1/2"	21	44.5	20	290	4221 0000 84
		Assembly	3/8"	7.5	15.9	14	203	4221 0001 09
Whip hose	Assembly	3/8"	13	27.5	12	174	4221 0001 10	
	Assembly	3/8"	21	44.5	11	160	4221 0001 11	
	Assembly	3/8"	21	44.5	11	160	4221 0001 11	
EU 10.4								
SmartQIC 15E	Hose kit	Assembly	3/8" and 1/2"	21	44.5	11	160	4221 0000 89
		Assembly	3/8" and 1/2"	21	44.5	11	160	4221 0000 90
		Heavy Duty	3/8" and 1/2"	21	44.5	20	290	4221 0000 87
	Whip hose	Heavy Duty	3/8" and 1/2"	21	44.5	20	290	4221 0000 88
		Heavy Duty	1/2" and 3/4"	43	91.1	20	290	4221 0000 91
		Heavy Duty	1/2" and 3/4"	43	91.1	20	290	4221 0000 92
Whip hose	Heavy Duty	3/8"	21	44.5	20	290	4221 0001 12	
	Heavy Duty	1/2"	43	91.1	20	290	4221 0001 13	
ISO 6150-B – US/Global								
SmartQIC 08US	Hose kit	Assembly	1/4"	7.5	15.9	14	203	4221 0000 93
		Assembly	1/4" and 3/8"	13	27.5	12	174	4221 0000 94
		Assembly	1/4" and 3/8"	13	27.5	12	174	4221 0000 95
		Assembly	3/8"	13	27.5	12	174	4221 0001 14
SmartQIC 10US	Hose kit	Assembly	1/4" and 3/8"	13	27.5	12	174	4221 0001 01
		Assembly	1/4" and 3/8"	13	27.5	12	174	4221 0001 02
		Assembly	3/8" and 1/2"	21	44.5	11	160	4221 0001 05
	Whip hose	Assembly	3/8" and 1/2"	21	44.5	11	160	4221 0001 06
		Heavy Duty	3/8" and 1/2"	21	44.5	20	290	4221 0001 03
		Heavy Duty	3/8" and 1/2"	21	44.5	20	290	4221 0001 04
Whip hose	Assembly	3/8"	13	27.5	12	174	4221 0001 17	
	Assembly	3/8"	21	44.5	11	160	4221 0001 18	
	Heavy Duty	3/8"	21	44.5	20	290	4221 0001 19	
SmartQIC 15US	Hose kit	Assembly	3/8" and 1/2"	21	44.5	11	160	4221 0000 97
		Assembly	3/8" and 1/2"	21	44.5	11	160	4221 0000 98
		Heavy Duty	3/8" and 1/2"	21	44.5	20	290	4221 0000 96
	Whip hose	Heavy Duty	1/2" and 3/4"	75	158.9	20	290	4221 0000 99
		Heavy Duty	1/2" and 3/4"	75	158.9	20	290	4221 0001 00
Whip hose	Assembly	3/8"	21	44.5	11	160	4221 0001 15	
	Heavy Duty	3/8"	21	44.5	20	290	4221 0001 16	
Asia								
SmartQIC 10A	Hose kit	Assembly	1/4"	7.5	15.9	14	203	4221 0001 07
		Assembly	1/4" and 3/8"	13	27.5	12	174	4221 0001 08

All prices are recommended campaign prices excluding VAT. Offers valid from 2023-03-01 to 2023-12-31.

Contact your Atlas Copco distributor to buy these tools.



Scan the QR code to discover more of our brochures.



Atlas Copco

Atlas Copco Tools Central Europe GmbH
+49 201 2177 903
tools.de@atlas copco.com
www.atlas copco.com